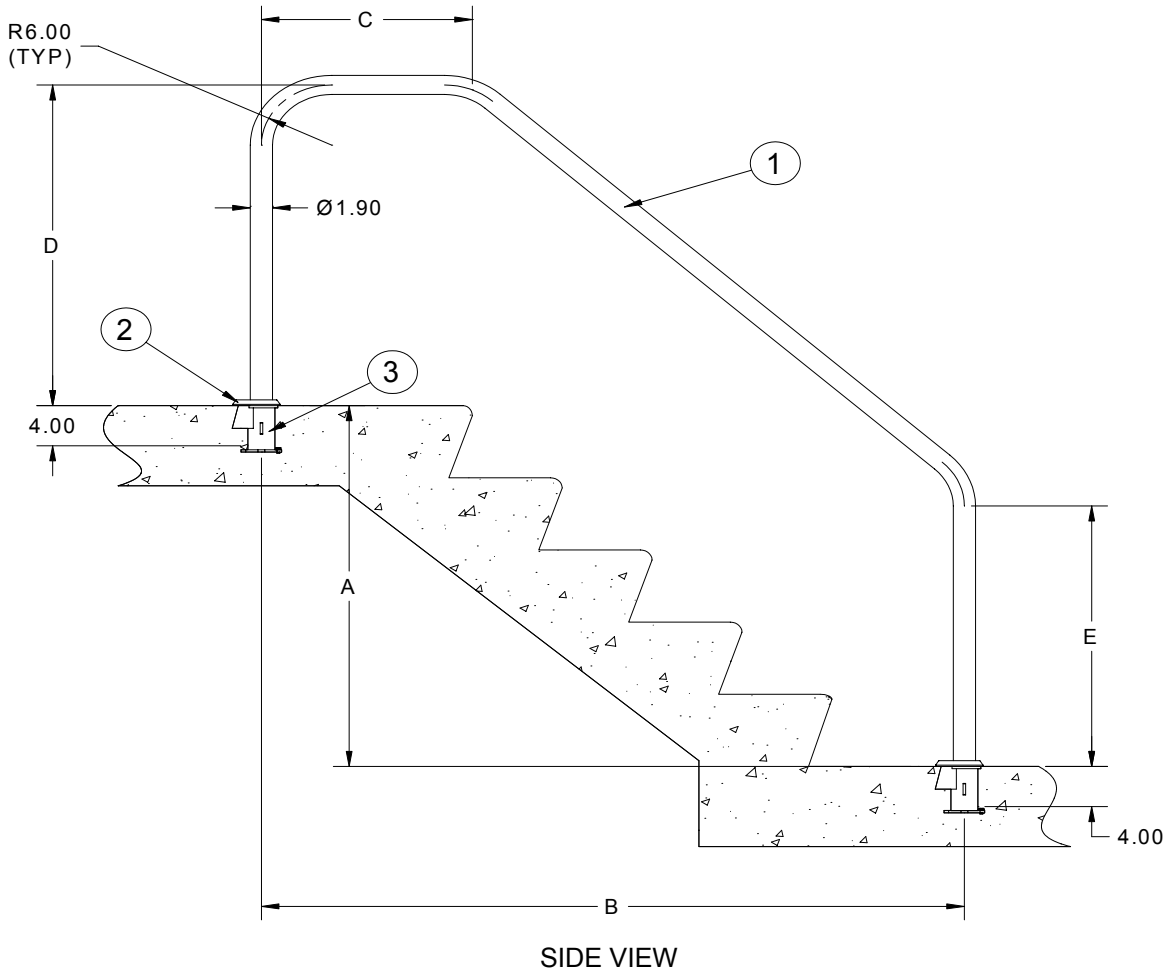


3-Bend Commercial Handrail



MODEL NUMBER	A	B	C	D	E
3HR-4-065, 3HR-4-065-MG (Marine Grade)	26.00	48.00	18.00	32.00	26.00
3HR-5-065, 3HR-5-065-MG	36.00	60.00	18.00	32.00	26.00
3HR-5.5-065, 3HR-5.5-065-MG	32.00	66.00	18.00	32.00	29.00
3HR-6-065, 3HR-6-065-MG	46.00	72.00	18.00	32.00	26.00
3HR-6.5-065, 3HR-6.5-065-MG	32.00	78.00	35.00	34.00	29.00
3HR-7-065, 3HR-7-065-MG	36.00	84.00	40.00	30.00	29.00
3HR-8-065, 3HR-8-065-MG	30.00	96.00	53.00	34.00	33.00
3HR-4-065-1, 3HR-4-065-1-MG	38.00	48.00	18.00	32.00	38.00*
3HR-5-065-1, 3HR-5-065-1-MG	48.00	60.00	18.00	32.00	38.00*
3HR-5.5-065-1, 3HR-5.5-065-1MG	44.00*	66.00	18.00	32.00	41.00*
3HR-6-065-1, 3HR-6-065-1-MG	58.00*	72.00	18.00	32.00	38.00*
3HR-6.5-065-1, 3HR-6.5-065-1MG	44.00*	78.00	35.00	34.00	41.00*
3HR-7-065-1, 3HR-7-065-1-MG	48.00*	84.00	40.00	30.00	41.00*
3HR-8-065-1, 3HR-8-065-1-MG	42.00*	96.00	53.00	34.00	45.00*

* HANDRAILS CAN BE CUT TO APPROPRIATE LENGTH ON SITE.

Specification Number:	SRS-601	
Product Description:	3-Bend Commercial Handrail	
S.R. Smith Part Number:	3HR-4-049 to 3HR-8-065-1-MG	Scale: NTS
Revision:	A	Date: 05/28/03
Written By:	T. Weil	Date: 05/28/03
Approved By:	B. Bisceglia	Date: 05/30/03
Page 1 of 2	Proprietary and confidential: The information contained in this specification is the sole property of S.R. Smith LLC. Any reproduction in part or whole without the written consent of S.R. Smith LLC is prohibited.	

S.R. Smith, LLC
P.O. Box 400, 1017 SW Berg Parkway
Canby, Oregon 97013
Tel: (888) 677-7776 (503) 266-2231
Fax: (503) 266-4334
www.srsmith.com



S.R. Smith LLC Commercial Division

Product Specifications - Written

Product Name: 3-Bend Commercial Handrail

Part Number: 3HR-4-065 to 3HR-8-065-1-MG

General Notes:

The **3-Bend Commercial Handrail** is a standard height rail made of polished type 304 stainless steel. The handrail is designed to run generally parallel with an angle typical of pool steps. An extended front leg model is also available.

Application:

With proper anchoring, the 3-Bend Handrail is suitable for use on stairs and slopes on poured concrete, shotcrete, fiberglass, and vinyl commercial pools and spas as well as for other applications in most geographic areas.

Specifications:

- 1 **Handrail:** The handrail is made of 1.9" O.D. x .065 (48.3mm x 1.65) type 304 polished stainless steel and all bends are a nominal 6" (152.4mm) radius. Both ends of the handrail are drilled below deck level to allow for anchoring by reinforcing rods, if an anchor assembly is not desired. The Extended Length Front Leg model utilizes an additional 12" (304.8mm) to address varying site and local requirements. The extended handrails can be cut to appropriate length on site.
- 2 **Escutcheon (Optional):** (p/n IEP-100): This recommended oblong escutcheon plate is 4" (101.6mm) in length and is made of chrome plated cast brass. The escutcheon includes a tamper resistant, stainless steel set screw. Alternative escutcheons include p/n EP-100A or EP-100F.
- 3 **Anchor Assembly (Optional)** (p/n IAS-100, see spec sheet for SRS-913): These recommended anchor sockets are bronze castings. They are intended for heavy-duty commercial use and secure fixtures by means of a wedge assembly. The anchor comes with a brass 1/4-20 UNC grounding screw for bonding. Alternative anchor assemblies include p/n or AS-100B (see spec sheet for SRS-908).

Additional Product Numbers and Shipping Weight:

MODEL NUMBER	DESCRIPTION	SHIPPING WEIGHT
3HR-4-065	4 FOOT 3-BEND HANDRAIL	22 lbs. (9.98kg)
3HR-5-065	5 FOOT 3-BEND HANDRAIL	27 lbs. (12.2kg)
3HR-5.5-065	5-1/2 FOOT 3-BEND HAND RAIL	30 lbs. (13.6kg)
3HR-6-065	6 FOOT 3-BEND HANDRAIL	32 lbs. (14.5kg)
3HR-6.5-065	6-1/2 FOOT 3-BEND HANDRAIL	35 lbs. (15.9kg)
3HR-7-065	7 FOOT 3-BEND HANDRAIL	37 lbs. (16.8kg)
3HR-8-065	8 FOOT 3-BEND HANDRAIL	39 lbs. (17.7kg)
3HR-4-065-MG	4 FOOT MARINE GRADE 316 STAINLESS STEEL 3-BEND HANDRAIL	22 lbs. (9.98kg)
3HR-5-065-MG	5 FOOT MARINE GRADE 316 STAINLESS STEEL 3-BEND HANDRAIL	27 lbs. (12.2kg)
3HR-5.5-065-MG	5-1/2 FOOT MARINE GRADE 316 STAINLESS STEEL 3-BEND HAND RAIL	30 lbs. (13.6kg)
3HR-6-065-MG	6 FOOT MARINE GRADE 316 STAINLESS STEEL 3-BEND HANDRAIL	32 lbs. (14.5kg)
3HR-6.5-065-MG	6-1/2 MARINE GRADE 316 STAINLESS STEEL FOOT 3-BEND HANDRAIL	35 lbs. (15.9kg)
3HR-7-065-MG	7 FOOT MARINE GRADE 316 STAINLESS STEEL 3-BEND HANDRAIL	37 lbs. (16.8kg)
3HR-8-065-MG	8 FOOT MARINE GRADE 316 STAINLESS STEEL 3-BEND HANDRAIL	39 lbs. (17.7kg)
3HR-4-065-1	4 FOOT 3-BEND EXTENDED LENGTH FRONT LEG HANDRAIL	24 lbs. (10.9kg)
3HR-5-065-1	5 FOOT 3-BEND EXTENDED LENGTH FRONT LEG HANDRAIL	29 lbs. (13.2kg)
3HR-5.5-065-1	5-1/2 FOOT 3-BEND EXTENDED LENGTH FRONT LEG HAND RAIL	32 lbs. (14.5kg)
3HR-6-065-1	6 FOOT 3-BEND EXTENDED LENGTH FRONT LEG HANDRAIL	34 lbs. (15.4kg)
3HR-6.5-065-1	6-1/2 FOOT 3-BEND EXTENDED LENGTH FRONT LEG HANDRAIL	37 lbs. (16.8kg)
3HR-7-065-1	7 FOOT 3-BEND EXTENDED LENGTH FRONT LEG HANDRAIL	39 lbs. (17.7kg)
3HR-8-065-1	8 FOOT 3-BEND EXTENDED LENGTH FRONT LEG HANDRAIL	41 lbs. (18.6kg)
3HR-4-065-1-MG	4 FOOT MARINE GRADE 316 S.S. 3-BEND EXTENDED LENGTH FRONT LEG HANDRAIL	24 lbs. (10.9kg)
3HR-5-065-1-MG	5 FOOT MARINE GRADE 316 S.S. 3-BEND EXTENDED LENGTH FRONT LEG HANDRAIL	29 lbs. (13.2kg)
3HR-5.5-065-1MG	5-1/2 FOOT MARINE GRADE 316 S.S. 3-BEND EXTENDED LENGTH FRONT LEG HANDRAIL	32 lbs. (14.5kg)
3HR-6-065-1-MG	6 FOOT MARINE GRADE 316 S.S. 3-BEND EXTENDED LENGTH FRONT LEG HANDRAIL	34 lbs. (15.4kg)
3HR-6.5-065-1MG	6-1/2 FOOT MARINE GRADE 316 S.S. 3-BEND EXTENDED LENGTH FRONT LEG HANDRAIL	37 lbs. (16.8kg)
3HR-7-065-1-MG	7 FOOT MARINE GRADE 316 S.S. 3-BEND EXTENDED LENGTH FRONT LEG HANDRAIL	39 lbs. (17.7kg)
3HR-8-065-1-MG	8 FOOT MARINE GRADE 316 S.S. 3-BEND EXTENDED LENGTH FRONT LEG HANDRAIL	41 lbs. (18.6kg)

Specification Number:	SRS-601	
Product Description:	3-Bend Commercial Handrail	
S.R. Smith Part Number:	3HR-4-049 to 3HR-8-065-1-MG	
Revision:	A	Date: 05/28/03
Written By:	T. Weil	Date: 05/28/03
Approved By:	B. Bisceglia	Date: 05/30/03
Page 2 of 2	Proprietary and confidential: The information contained in this specification is the sole property of S.R. Smith LLC. Any reproduction in part or whole without the written consent of S.R. Smith LLC is prohibited.	

S.R. Smith, LLC
P.O. Box 400, 1017 SW Berg Parkway
Canby, Oregon 97013
Tel: (888) 677-7776 (503) 266-2231
Fax: (503) 266-4334
www.srsmith.com