

STRENGTH. EXPERIENCE. FORM.

*What makes the best athletes also
makes the best starting platforms.*



Launching Innovation Since 1972

Spectrum Aquatics offers both single and dual post starting platforms, which include incredible non-slip tops and steps. Our stainless steel block tops are coated with a grit overlay providing a level of traction not available in competing products.

Our plastic tops are made of low density polyethylene and contain a non-slip surface that surpasses industry standards. Plastic tops are a great choice for facilities that remove and store the platforms frequently - durable and able to withstand harsh pool environments - resisting discoloration, fading and cracking.

- Unlimited color and logo options available on Xcellerator®, Record Breaker and Fusion Starting Platforms
- All starting platforms can be customized to fit virtually any existing anchor
- Powder coating available in any color and a variety of finishes
- Electropolished and Spectra Shield® coated stainless steel provides high-quality finish that resists corrosion
- Easy to install and remove
- 18" wide competition-width H Style backstroke bar or 18" U-bar on dual post models
- Front hand and toe grips for faster takeoffs
- Easy-to-read lane numbers visible from all four sides
- Anchors and covers sold separately
- Our starting platforms comply with World Aquatics, USA Swimming, NCAA and NFHS regulations (excluding the Quicksilver)

CUSTOMIZE YOUR PLATFORMS!

ANCHORS & BASES + POWDER COATING & CUSTOM LOGOS

Select the configuration that best suits your needs



CALL US TO GET STARTED – 800.791.8056

SINGLE POST PLATFORMS



XCELLERATOR
57282



XCELLERATOR
SQUARE POST



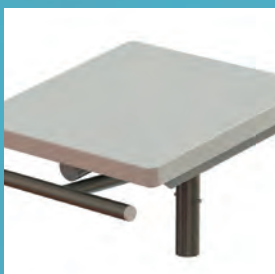
RECORD BREAKER
57283



RECORD BREAKER
SQUARE POST



GRIZZLY
21654 - SIDE STEP
21655 - REAR STEP



QUICKSILVER
57289



GROWLER
21653 - SIDE STEP | 21657 - REAR STEP



FUSION
57291

Why choose Spectrum?

Customer service

- Nationwide field, engineering & technical support
- Quick turnaround times

Performance

- Anchors engineered to eliminate deflection

Flexibility

- Works with multiple deck configurations
- Accommodates setbacks from 12" - 40" and waterdraft up to 12"

Material Finish	<ul style="list-style-type: none"> • 600 grit stainless steel finish offers great corrosion resistance and ease of cleaning 		
Frame Finish	<ul style="list-style-type: none"> • 304-L stainless steel, electropolished and passivated stainless steel coated with Spectra Shield™ for maximum corrosion resistance • Powder coating colors available 		
Anchor	<ul style="list-style-type: none"> • Constructed of machined bronze will not rust • Patented anti-wobble locator pinned design • Alignment slot design offers ease of installation and removal 		
Post and Frame Construction	<ul style="list-style-type: none"> • Single post round tubing with continuous bend and no welds for superior strength • Dual post options also available • Same stainless steel material as frame for maximum corrosion resistance 		
Footboard	<ul style="list-style-type: none"> • Stainless steel tops with 3M non-slip material • Track style wedge is adjustable and removable for enhanced flexibility. Available for the Xcellerator, Record Breaker and Fusion • No visible hardware • Rotationally molded tops made of low density polyethylene for the Growler and Grizzly 	<ul style="list-style-type: none"> • No visible hardware • hardware • Rotationally molded tops made of low density polyethylene for the Growler and Grizzly • No visible hardware 	
Side Step	<ul style="list-style-type: none"> • Available and ideal for bulkhead applications • 3M non-slip surface • Easy mount Handles 		
Handles	<ul style="list-style-type: none"> • Stainless steel construction • Side handles enable fast take offs • 18" H bar design backstroke handles Top 		
Top Dimensions	32"x24" Fusion, Xcellerator and Record Breaker	32"x25" Growler, Cougar23	23"x25" Grizzly, Bighorn
Setback	18" - 24"	18" - 35"	18" - 36"
Compliance	<ul style="list-style-type: none"> • Compliant with World Aquatics, USA Swimming, NCAA and NFSHSA 		
Other	<ul style="list-style-type: none"> • Compatible with leading timing systems • Custom colors and logos available 		

BACKSTROKE START DEVICES

Backstroke swimmers routinely risk a slip start when pushing off a pool wall or slippery touchpad. Our backstroke start devices are designed to reduce slipping, and are available in two different models: automatic retraction, and stationary.

AUTOMATIC RETRACTION | 143081



1. Unlock and pull wedge strip to desired location



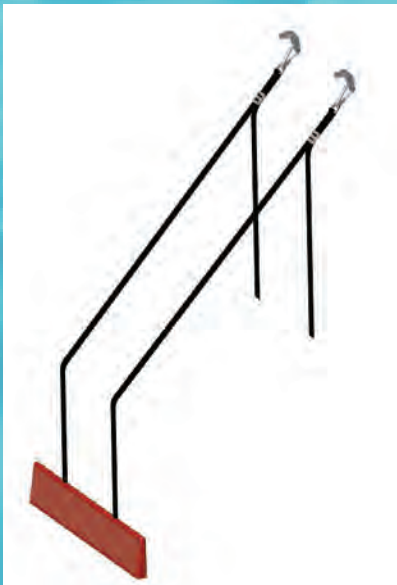
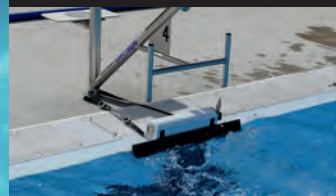
2. Place feet on nonslip wedge



3. Proceed with your backstroke start



4. Wedge automatically retracts out of the water



STATIONARY BACKSTROKE START WEDGE | 1710083

The Stationary Backstroke Start Wedge allows swimmers to perfect their backstroke takeoffs at their local pool.

- Features a 65cm x 8cm (25.6" x 3.1") nonslip wedge with a 10° angle to secure foot placement along pool wall
- Same non-slip wedge and straps as our top-of-the-line Backstroke Start Device
- Can easily attach to nearly any existing starting block frame
- Includes stainless steel hardware to resist corrosion
- World Aquatics, USA Swimming and NCAA compliant, when installed correctly

PROTECT YOUR PLATFORMS

Starting Platform covers protect your investment by preventing unauthorized use of the platforms and shielding the platform surface from the elements when they are not use.



153174 - HARD COVER



21400 - SOFT COVER

DUAL EXPANSION POST PLATFORMS

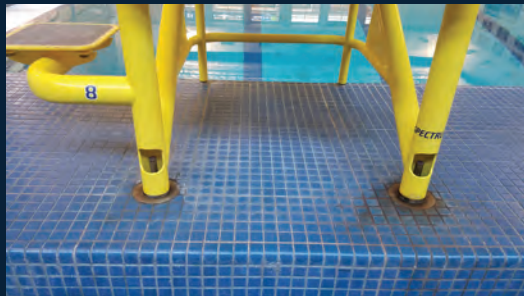


ELIMINATES DUAL POST ANCHOR WOBBLE

Easy to Install into EXISTING or NEW DUAL POST ANCHORS (also available in square single post).

Platform Legs Expand into anchors - no need to rely on the longevity of small anchor wedge parts to tighten around the block legs.

Ask about our dual post expansion anchor plugs.



DUAL POST PLATFORMS



XCELLERATOR

133171



RECORD BREAKER

57741



COUGAR

21135 - SIDE STEP
21145 - REAR STEP



BIG HORN

21095
21115 - LONG REACH

ASK US ABOUT OUR PATENTED ANCHORING SYSTEM

www.spectrumproducts.com